



## Eaton Place

**OATLANDS CHASE, WEYBRIDGE, SURREY, KT13 9RP**

An exclusive and private gated development of just three brand new 3 bedroom homes, each with 2 parking spaces and electric car charging points. Eaton Place is conveniently situated within a short walk of Walton-on-Thames mainline station.

---





# Specification

## Kitchen & Utility

- Light Grey' Painted Shaker fascias with contrasting 'Driftwood' effect feature doors.
- 'Driftwood' effect Breakfast bar back panelling to match feature doors.
- 20mm Organic White Caesarstone worktop, upstands & window cill
- Chrome T Bar Cupboard Knobs.
- LED lighting detail to underside of wall cabinets and below breakfast bar.
- All Siemens main appliances, including induction hob, built-in microwave, integrated dishwasher
- Quooker Hop Tap
- Siemens integrated washing machine and dryer in separate utility room

## Flooring

- Ted Todd engineered oak herringbone flooring to main hall & living room
- Large format (900mm x 900mm) luxury porcelain tiles in kitchen and dining area
- Faux-silk carpet to all bedrooms and first floor landing
- Carpet runner on staircase

## Security & Heating

- Extra tall painted solid veneered 45mm doors with polished chrome ironmongery
- Painted hardwood staircase
- Gas central heating, powered by Worcester-Bosch boiler
- Zoned wet underfloor heating to ground and first floor

## Media

- Pre-wired for Sky Q
- Hard wired Ethernet ports to each room
- USB charging sockets to bedrooms

## Exterior Features

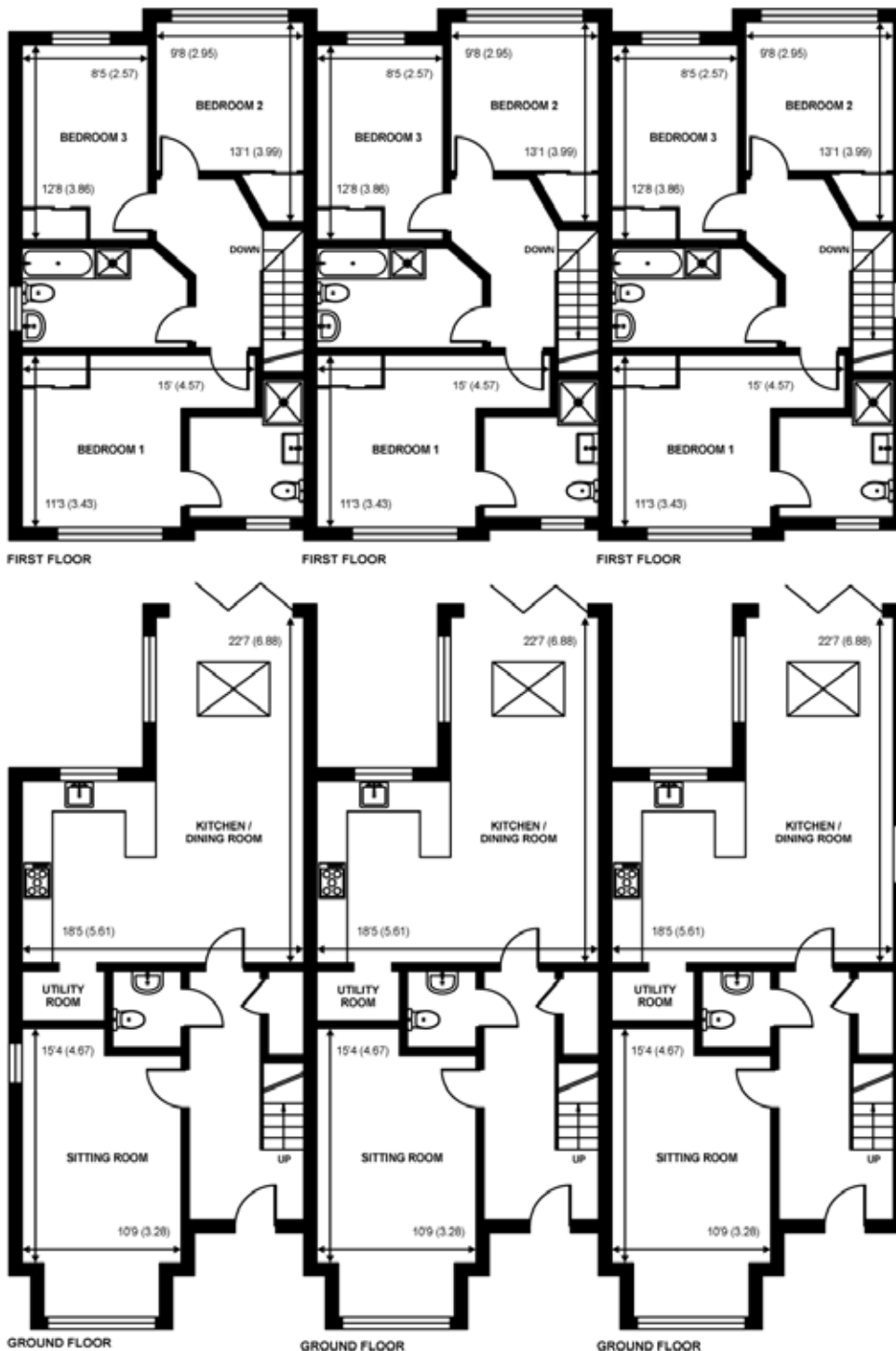
- Indian sandstone patio paving
- Block paved parking areas
- Electric car charging points
- Driveway communal lighting
- Communal bin and cycle storage
- 10 year structural defects warranty







FLOORPLAN



**SALES ENQUIRIES:**

T: 01932 843322 E: [weybridge@curchods.com](mailto:weybridge@curchods.com)

Portmore House, 54 Church Street, Weybridge, Surrey, KT13 8DP

**IMPORTANT NOTICE TO PURCHASERS:** We endeavour to make our sales particulars accurate and reliable, however, they do not constitute or form part of an offer or any contract and none is to be relied upon as statements of representation or fact. The services, systems and appliances listed in this specification have not been tested by us and no guarantees as to their operating ability or efficiency are given. All measurements have been taken as a guide to prospective buyers only, and are not precise. If you require clarification or further information on any points, please contact us, especially if you are travelling some distance to view.

We routinely refer purchasers to Curchods Home Conveyancing. Curchods undertakes activities on behalf of the law firm including marketing, instruction, verification of identity, search ordering, sales progression and overall management of the Curchods Home Conveyancing service, which is offered to you on a "no sale, no legal fee" basis. It is your decision whether you choose to deal with Curchods Home Conveyancing. Should you decide to, you should know that in return for these services, the law firm will pay a fee to Curchods upon completion - this cost (£475 on average) is borne by the law firm, is within the market norm for the service provided, and is not an additional cost to you.

We routinely refer purchasers who require the services of a property surveyor to Spencer Bray. It is your decision whether you choose to deal with Spencer Bray. In making that decision you should know that we receive vouchers valued at between £50 - £100 per survey completed.